



ELK Biotechnology

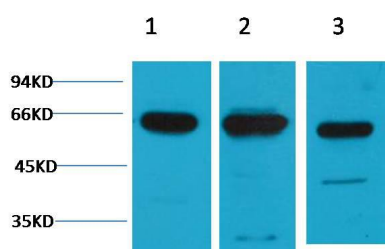
c-Fos Rabbit pAb

Catalog NO.: EA042

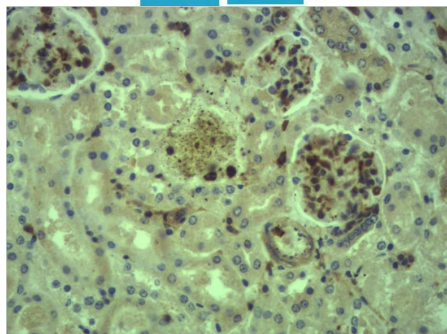
For research use only.

Overview

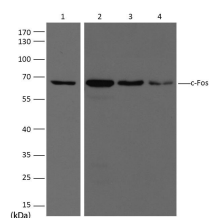
Product name	c-Fos Rabbit polyclonal antibody
Source	Rabbit
Applications	WB, IHC
Species reactivity	Human, Rat, Mouse
Recommended dilutions	WesternBlot:1/1000-2000 Immunohistochemistry:1/500-1000 NOTE: Optimal dilutions should be determined by the end user.
Immunogen	Recombinant Protein
Species	Human
Storage	PBS with 0.02% sodium azide and 50% glycerol pH 7.4. Store at -20° C. Avoid repeated freeze-thaw cycles.
Isotype	IgG
Clonality	Polyclonal
Concentration	1 mg/ml
Observed band	62kDa
GenelD (Human)	2353
Human Swiss-Prot No.	P01100
Cellular localization	Nucleus
Alternative Names	AP1 antibody, Cellular oncogene c fos antibody, p55 antibody, proto oncogene c fos antibody
Background	c-Fos is a proto-oncogene that is the human homolog of the retroviral oncogene v-fos. c-fos is 380 amino acid protein with a basic leucine zipper region for dimerisation and DNA-binding and a transactivation domain at C-terminus.



Western blot analysis of 1) HeLa, 2) Mouse Brain, 3) Rat Brain tissue with EA042 diluted at 1:2,000.



Immunohistochemical analysis of paraffin-embedded Mouse Kidney Tissue using c-Fos (EA042) Rabbit pAb diluted at 1:500.



Western blot analysis of extracts from HeLa (Lane 1), Mouse Kidney (Lane 2), Rat Kidney (Lane 3), Rat Brain (Lane 4), using c-Fos diluted at 1:2,000.