



ELK Biotechnology

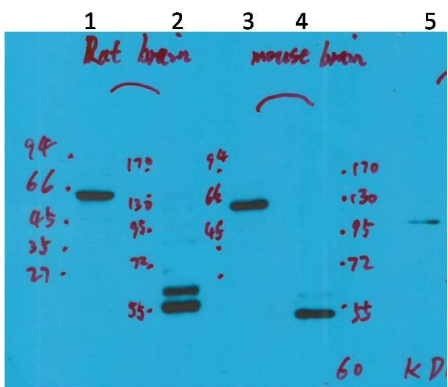
Kv10.2 Rabbit pAb

Catalog NO.: EA312

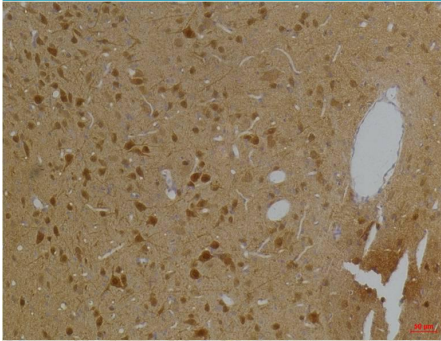
For research use only.

Overview

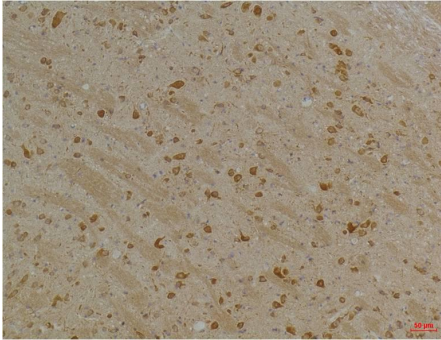
Product name	Kv10.2 Rabbit polyclonal antibody
Source	Rabbit
Applications	WB, IHC
Species reactivity	Human, Rat, Mouse
Recommended dilutions	WesternBlot:1/1000-2000 Immunohistochemistry:1/100-200 NOTE: Optimal dilutions should be determined by the end user.
Immunogen	Synthetic Peptide
Species	Human
Storage	PBS with 0.02% sodium azide and 50% glycerol pH 7.4. Store at -20° C. Avoid repeated freeze-thaw cycles.
Isotype	IgG
Clonality	Polyclonal
Concentration	1 mg/ml
Observed band	60kDa
GeneID (Human)	238271
Human Swiss-Prot No.	Q8NCM2
Cellular localization	Membrane
Alternative Names	EAG2,H EAG2,KCNH5
Background	N/A



Western blot analysis of 1) Rat Brain Tissue-Low Molecular Protein Marker, 2)Rat Brain Tissue-High Molecular Protein Marker, 3) Mouse Brain Tissue-Low Molecular Protein Marker, 4) Mouse Brain Tissue- High Molecular Protein Marker, 5) HepG2-Low Molecular P



Immunohistochemical analysis of paraffin-embedded Rat BrainTissue using Kv10.2 (EA312) Rabbit pAb diluted at 1:200.



Immunohistochemical analysis of paraffin-embedded Mouse BrainTissue using Kv10.2 (EA312) Rabbit pAb diluted at 1:200.